



Why Space Connect?

Right now, office-based businesses are moving quickly to managed, optimised and hybrid working models, with one crucial, over-arching need - **flexibility**.

With Space Connect, that's exactly what you get:

1. Exceptional affordability and value
2. A completely flexible, no-risk, no min-term agreement
3. Super-fast deployment - same-day setup, and multi-sites within less than a week!
4. Simple and easy self-configuration - quickly add or remove desks, rooms, floors and sites
5. Self-uploadable/configurable interactive floor plans
6. Future proofing - switch from bookable to agile working models, instantly*
7. Detailed real-time analytics
8. Enterprise-level, modular features and functionality, as standard
9. Choose the SaaS-only solution, or integrate with your choice of hardware
10. Covid-security features, as standard

Covid-security features, to help your business in the post-lockdown world



Desks

Flexible desk booking control, for social distancing

Covid policy and desk sanitisation alerts and notifications

Customisable Covid-security pre-screening questionnaires

Touch-free desk check-in, inc QR code



Meeting Room

Flexible room capacity control, for social distancing

Covid policy and space sanitisation alerts and notifications

Touch-free room check-in, inc QR code*

Contactless room booking



Visitor

Customisable Covid-security pre-screening questionnaires

Capture and store visitor acceptance of your Covid security policy

Touch-free visitor sign-in, inc QR code* and facial recognition



Analytics

Headcount and workspace capacity monitoring

Social distance mapping

Detailed Covid-secure contact tracing - staff, visitors and contractors

*coming soon

Used and loved by...



Choose from 3 integrated, enterprise-level feature-packed modules, on desktop and mobile app, each with built-in reporting and analytics

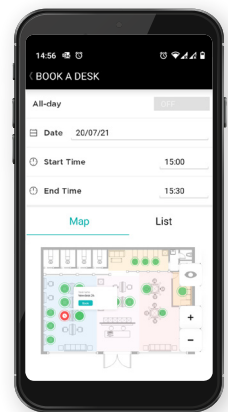
1. Desk Management module

Space Connect's unique Desk Management module enables you to self-configure, re-configure, scale and tailor your desk booking model in minutes.

No other solution makes it so easy for your users to find colleagues, search, book and check-in to available desks, all from their mobile app.

Unique and essential features include:

- Complete flexibility of desk management contract terms, with just 30 days' notice
- Instant desk activation/deactivation – and pay only for the desks you set as 'Active'
- Unlimited users at no additional charge
- Self-uploadable, interactive floor plans
- Third-party desk bookings
- Automated desk-booking 'Conflict Resolution'
- Covid-security alerts and notifications
- Customisable Covid-security pre-screening questionnaires
- Covid-secure contact tracing
- Touch-free desk check-in, including QR code



2. Meeting Room Management module

Space Connect delivers a feature-rich meeting room solution that integrates directly with your calendar environment, in real-time.

So your organisation's existing calendar is *a/ways* the single source of truth – no booking-clashes, no confusion. Just smooth, convenient, seamless booking.

- Two-way calendar integration (O365 and Google)
- Configure and set meeting room booking rules, quickly and easily
- Search for available meeting spaces by resource and capacity
- Manage meeting bookings on the go, via mobile
- Find and book spaces directly from your calendar or by using the 365 Add-In
- Easily manage your meeting and event catering
- Automatically pre-register external meeting guests
- Self-uploadable 3D map views
- Integrates with MS Teams and Zoom
- Out-of-the-box video conferencing automation
- Out-of-the-box, advanced room panel/signage integration
- Touch-free room check-in, including QR code (coming soon)

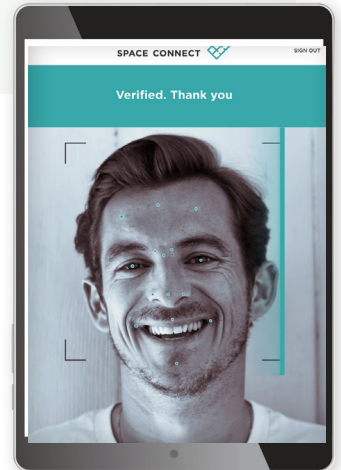


3. Visitor Management module

The Space Connect Visitor Management module delivers outstanding value, with advanced features such as AI-driven visitor face and voice recognition, alongside quick, easy and flexible self-configuration.

Now you can easily create and manage a tailored, branded, Covid-secure visitor experience, integrated seamlessly with your meeting room management.

- Unlimited visitors
- Register multiple types of visitors
- Customised branding
- Photo capture, badge printing and visitor T&Cs
- Real-time customisable notifications
- Automatic and manual visitor pre-registration
- Offer touch-free visitor registration with QR codes (coming soon)
- Offer touch-free visitor re-registration, with AI facial recognition

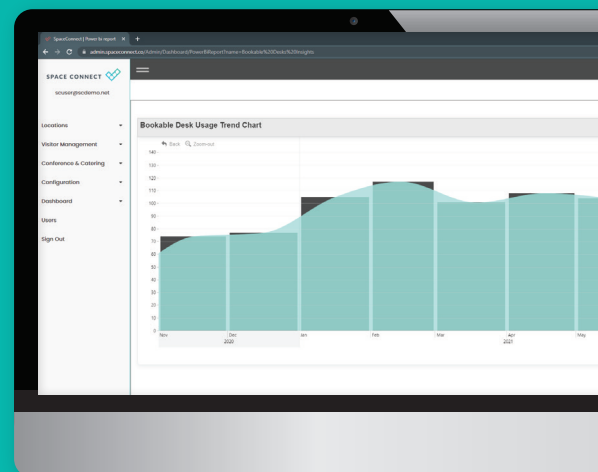


Reporting and Analytics

Each Space Connect module includes real-time reporting and analytics, and comes complete with MS Power BI Reports – free of charge.

KPI dashboards and graphical reports provide top-down, drillable insights into desk and workspace utilisation, behaviour and trends, allowing you to make informed, data-driven decisions.

- Monitor headcount and workspace capacity for Covid security
- Map desks and spaces for social distancing
- Easily run detailed Covid-secure contact tracing
- Analyse event booking and space usage trends
- Report by multiple variables, in real-time
- Full data extract capabilities
- Optimise workspace to meet staff and business needs
- Deliver real-estate costs savings and ROI



Get in touch

To book a demo or discover more about how Space Connect can make it incredibly easy and affordable for you to deliver fast, flexible workspace transformation, contact us:

Call: 01494 471 912 **Email:** Contact your account manager **Or visit:** smartcomm.co.uk

*Space occupancy sensors/docking station hardware required for agile desking

